



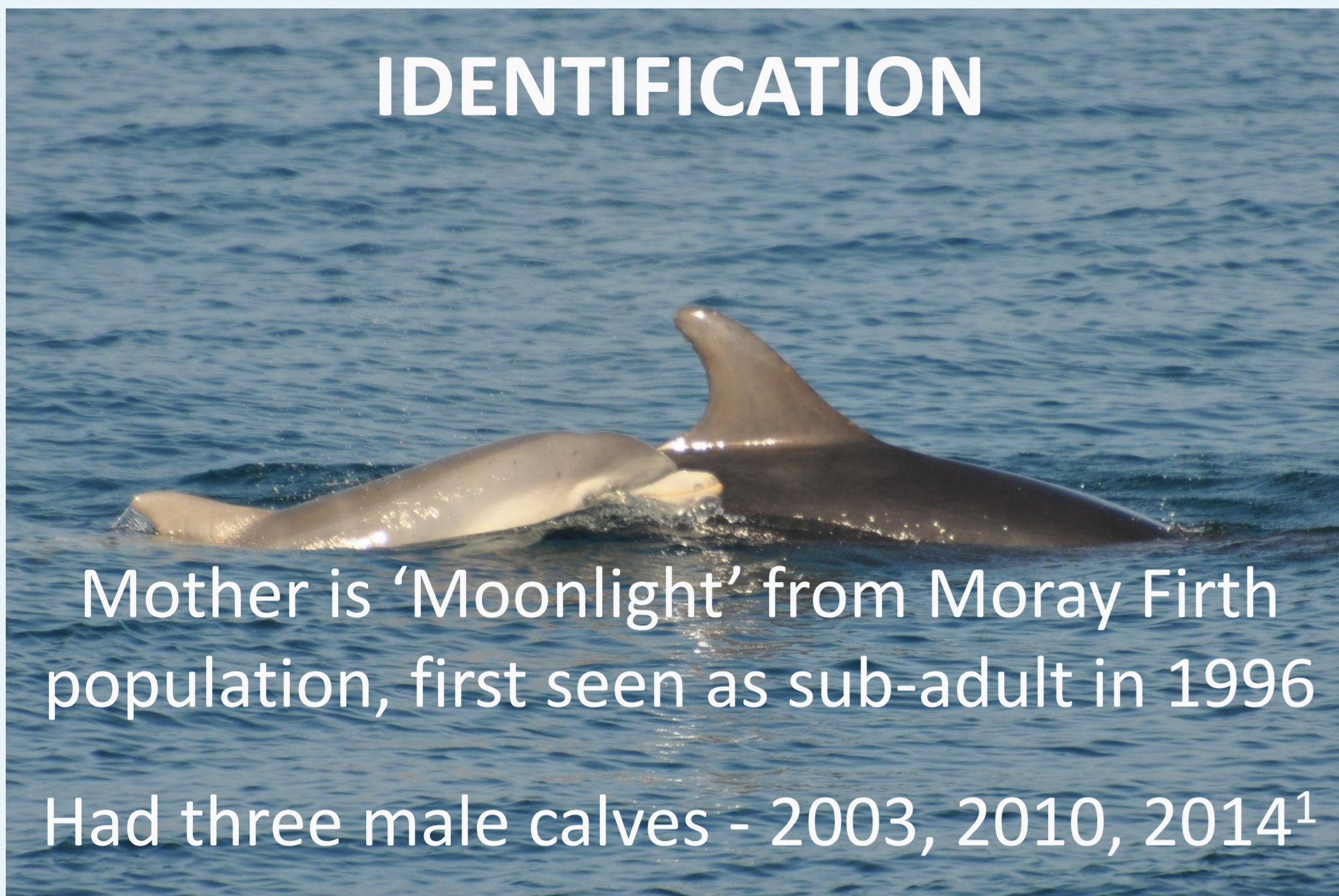
B. Manley

'Solitary' mother-calf bottlenose dolphins in long-term residence around the Isle of Man following long distance movement from home population

Bryony Manley, Jen Adams, Tom Felce - Manx Whale and Dolphin Watch, info@mwdw.net



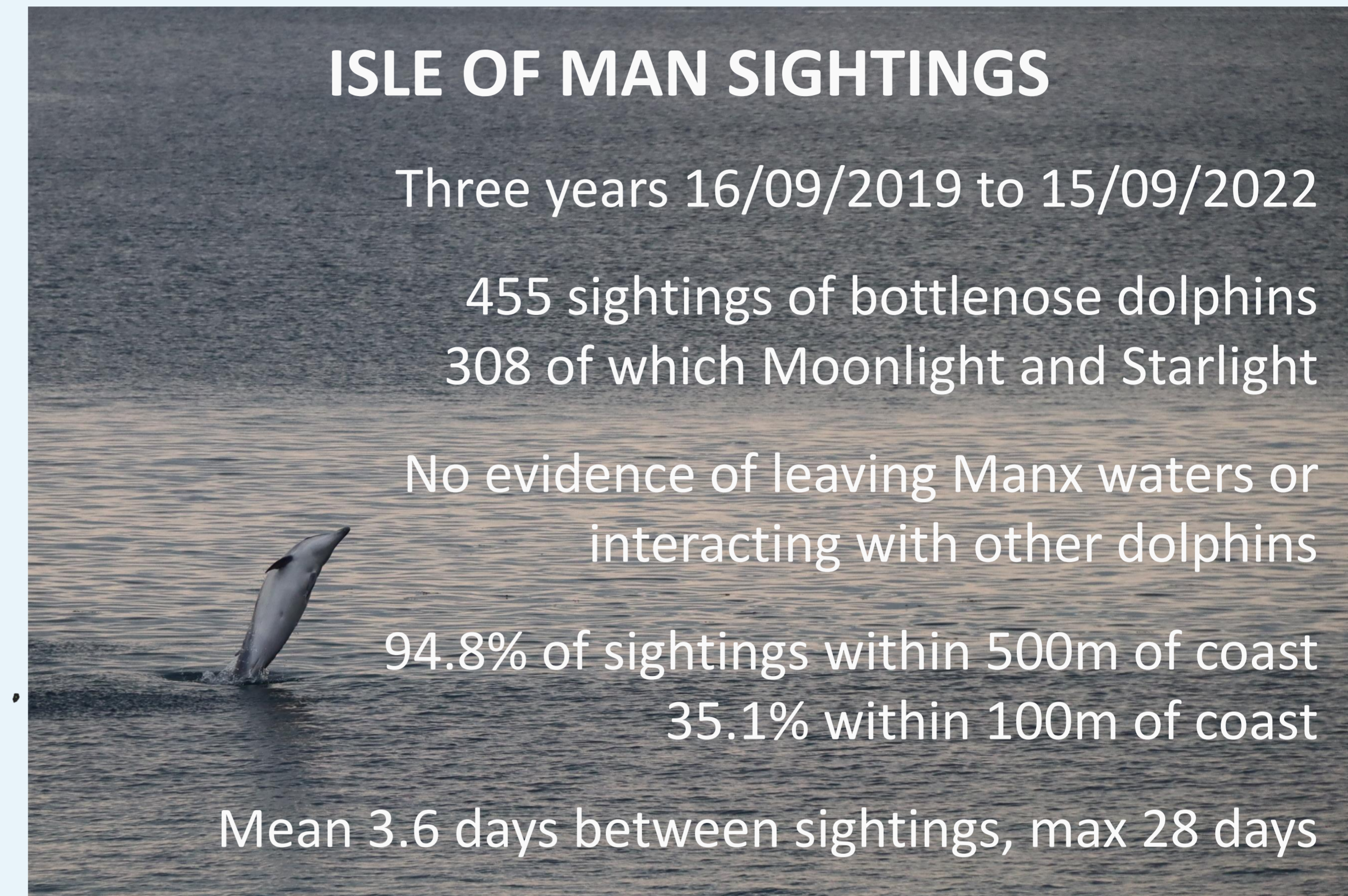
IDENTIFICATION



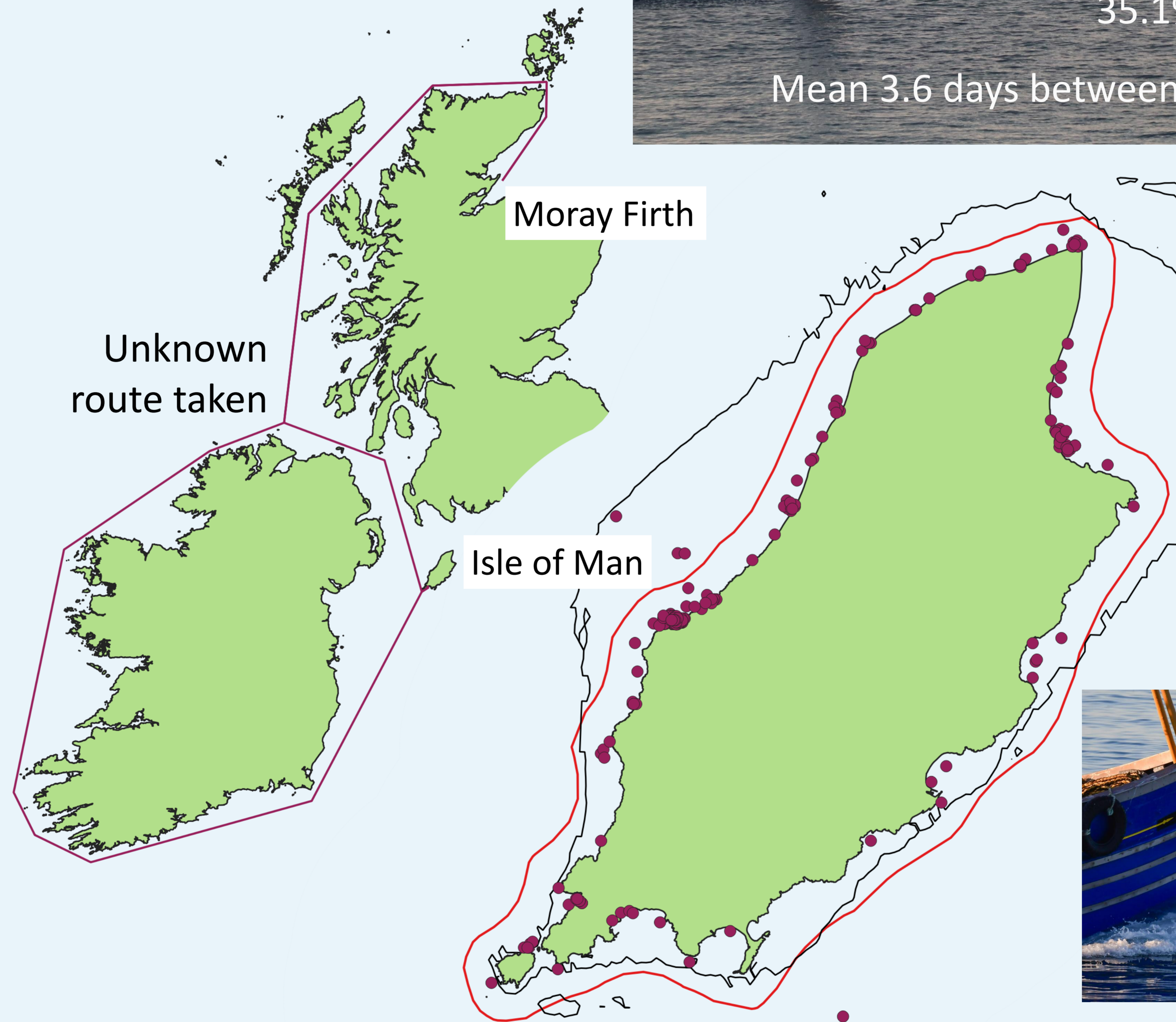
PUBLIC ENGAGEMENT



ISLE OF MAN SIGHTINGS



DISTANCE



Furthest match to Manx waters
First known from the Moray Firth



Following a sighting on 16th Sept 2019 of a small pod of bottlenose dolphin (*Tursiops truncatus*) close to shore with a tiny probably new-born calf this pod was then seen repeatedly in a shallow west coast bay of the Isle of Man (IOM). By the end of Jan 2020 the other dolphins disappeared and mother and calf were alone and continued to be seen regularly, displaying a year-round residency rather than the winter seasonality usually observed for IOM bottlenose dolphins. Unlike previous dispersals² Moonlight was repeatedly seen in the Moray Firth before arriving in IOM. There seems to be no evidence in the literature of such a long-term 'solitary' mother-calf pair.

Photographs: [clockwise from top left] Bryony Manley 2020, Ranulf Lucas 2022, Dave Corkish 2021, Brian Liggins 2022, Jeremy Rigby 2020, Bryony Manley 2020

References: [1] University of Aberdeen Lighthouse Field Station

[2] Robinson, K. P., *et al.* (2012). Discrete or not so discrete: Long distance movements by coastal bottlenose dolphins in UK and Irish waters. doi.org/10.47536/jcrm.v12i3.569

[3] Genov, T., *et al.* (2022). The longest recorded movement of an inshore common bottlenose dolphin (*Tursiops truncatus*). doi.org/10.1007/s42991-022-00316-5

